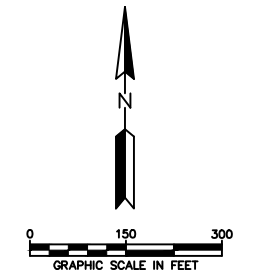
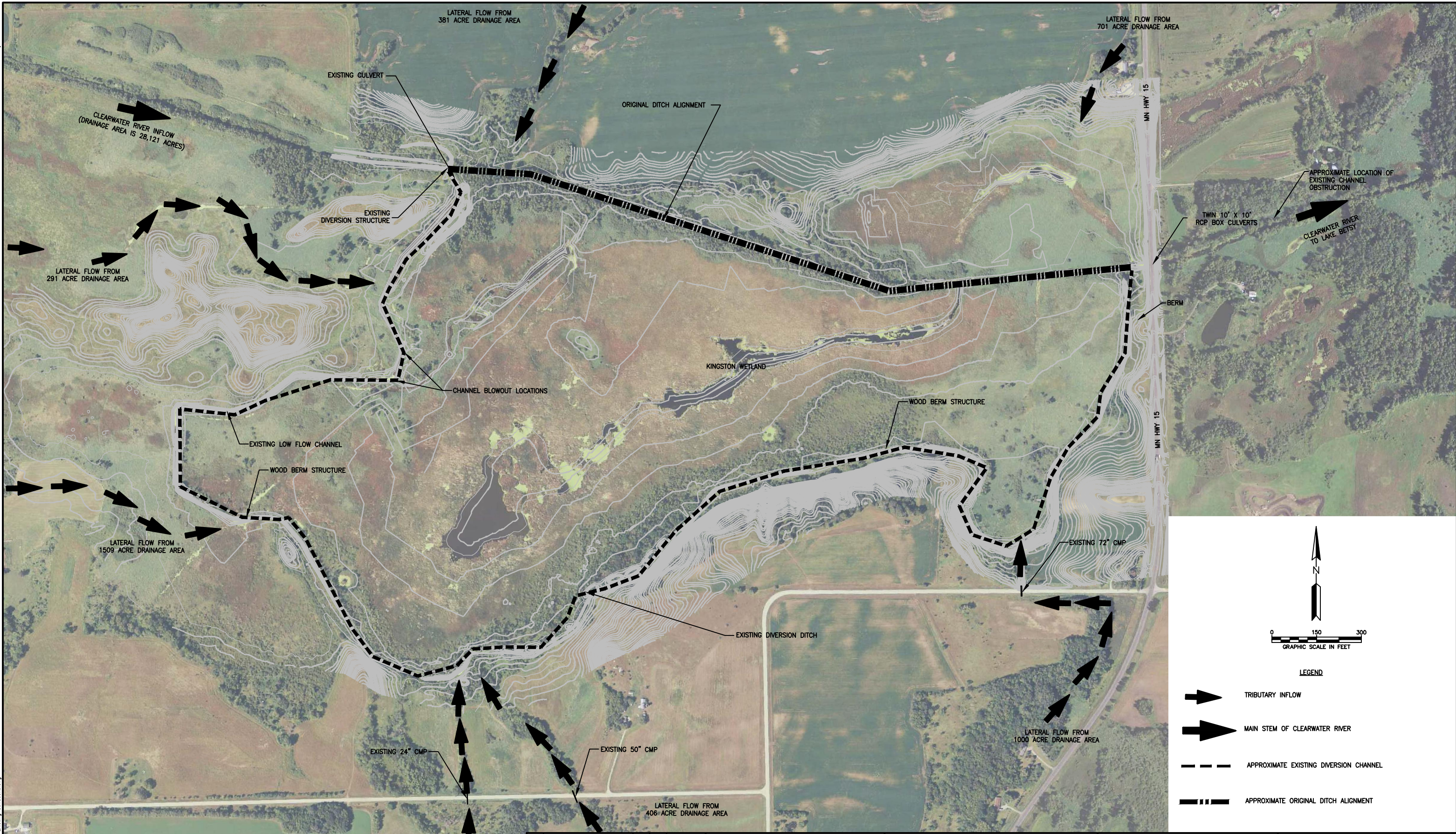


Plot Date & Time: 3 January 2013 8:11 PM

M:\0002\174\Construction\CA\101-Existing Conditions.dwg



- LEGEND**
- TRIBUTARY INFLOW
  - MAIN STEM OF CLEARWATER RIVER
  - APPROXIMATE EXISTING DIVERSION CHANNEL
  - APPROXIMATE ORIGINAL DITCH ALIGNMENT

REV	REVISION DESCRIPTION	DWN	APP	REV DATE
3	FINAL PLANS	BWC	RK	12/31/12
2	DRAFT FINAL PLANS	BWC	NCW	12/20/12
1	DRAFT PLAN SET	JVB	NCW	09/26/12

SEAL  
 I HEREBY CERTIFY THAT THIS PLAN, SPECIFICATION, OR REPORT WAS PREPARED BY ME OR UNDER MY DIRECT SUPERVISION AND THAT I AM A DULY REGISTERED PROFESSIONAL ENGINEER UNDER THE LAWS OF THE STATE OF MINNESOTA.  
 PRINT NAME: REBECCA KLICKHOHN  
 SIGNATURE: *Rebecca Klickhoehn*  
 DATE: 01/03/2013 REG. NO.: 42013

PRIME CONSULTANT

**Wenck**  
 Consulting Engineers  
 1800 PIONEER CREEK CENTER MAPLE PLAIN, MN 55359 763-479-4200 763-479-4242  
 Web Site: www.wenck.com

PROJECT TITLE  
**KINGSTON WETLAND RESTORATION**

CLEARWATER RIVER WATERSHED DISTRICT

SHEET TITLE  
**EXISTING CONDITIONS**

DWN BY BWC	CHK'D NCW	APP'D RK	DWG DATE 12/20/2012
PROJECT NO. 0002-174			SCALE 1"=300'
SHEET NO. C-101		REV NO. 3	



PHOTO C. FISH BARRIER INSTALLATION EXAMPLE 1



PHOTO D. FISH BARRIER INSTALLATION EXAMPLE 2

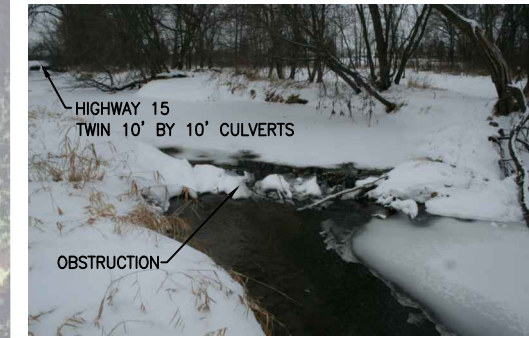


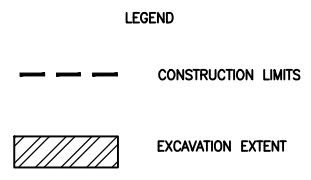
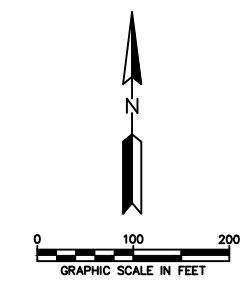
PHOTO E. EXISTING CHANNEL OBSTRUCTION TO BE REMOVED



PHOTO A. EXISTING CULVERT TO BE REMOVED



PHOTO B. EXISTING DIVERSION TO BE REMOVED



REV	REVISION DESCRIPTION	DWN	APP	REV DATE
3	FINAL PLANS	BWC	RK	12/31/12
2	DRAFT FINAL PLANS	BWC	NCW	12/20/12
1	DRAFT FINAL PLANS	BWC	NCW	12/21/12

SEAL

I HEREBY CERTIFY THAT THIS PLAN, SPECIFICATION, OR REPORT WAS PREPARED BY ME OR UNDER MY DIRECT SUPERVISION AND THAT I AM A DULY REGISTERED PROFESSIONAL ENGINEER UNDER THE LAWS OF THE STATE OF MINNESOTA.

PRINT NAME: REBECCA KLUCKHOHN

SIGNATURE: *Rebecca Kluckhohn*

DATE: 01/03/2013 REG. NO.: 42013

PRIME CONSULTANT

Wenck Associates, Inc.  
Consulting Engineers

1800 PIONEER CREEK CENTER  
MAPLE PLAIN, MN 55359

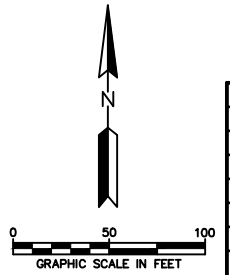
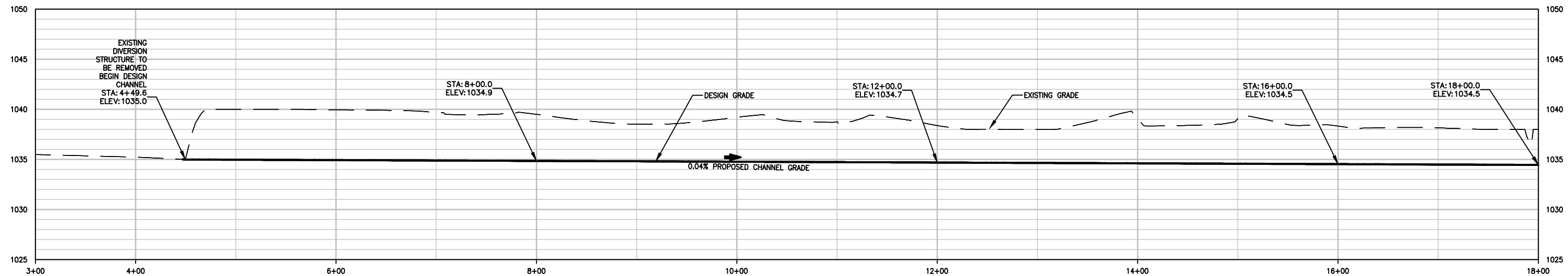
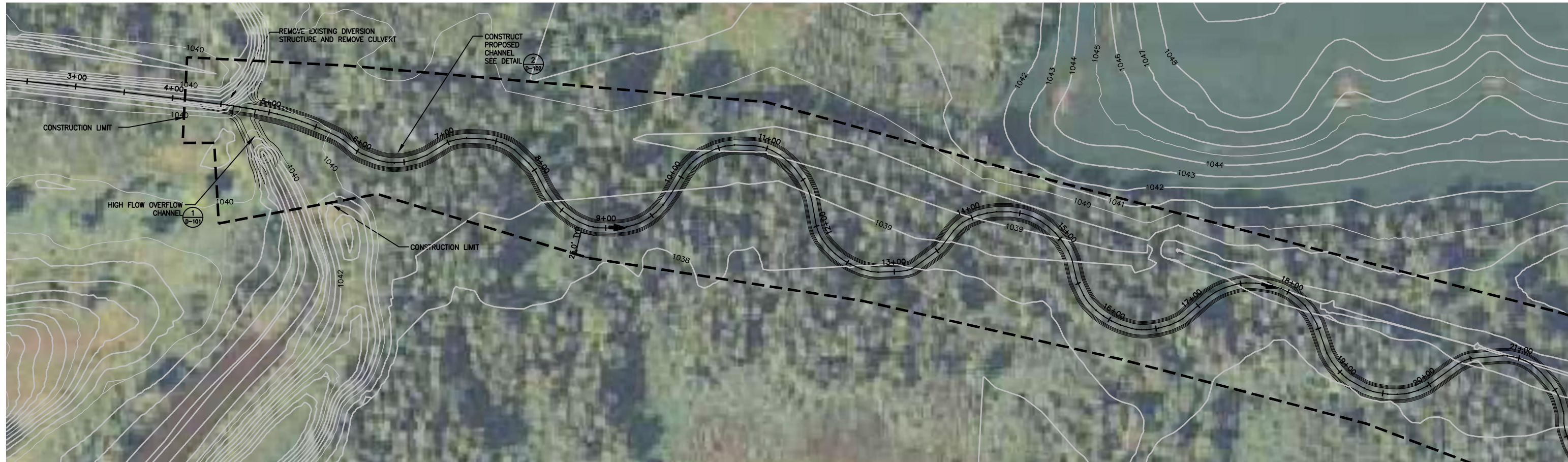
763-479-4200  
763-479-4242

PROJECT TITLE  
KINGSTON WETLAND RESTORATION

CLEARWATER RIVER  
WATERSHED DISTRICT

SHEET TITLE  
PROJECT OVERVIEW

DWN BY BWC	CHK'D NCW	APP'D RK	DWG DATE 12/21/2012
PROJECT NO. 0002-174	SHEET NO. C-102	SCALE AS NOTED	REV NO. 3



REV	REVISION DESCRIPTION	DWN	APP	REV DATE
3	FINAL PLANS	BWC	RK	12/20/12
2	DRAFT FINAL PLANS	BWC	NCW	12/20/12
1	DRAFT PLAN SET	JVB	NCW	09/26/12

SEAL  
 I HEREBY CERTIFY THAT THIS PLAN, SPECIFICATION, OR REPORT WAS PREPARED BY ME OR UNDER MY DIRECT SUPERVISION AND THAT I AM A DULY REGISTERED PROFESSIONAL ENGINEER UNDER THE LAWS OF THE STATE OF MINNESOTA.  
 PRINT NAME: REBECCA KLUCKHOHN  
 SIGNATURE: *Rebecca Kluckhohn*  
 DATE: 01/03/2013 REG. NO.: 42013

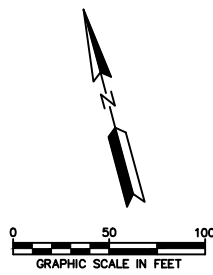
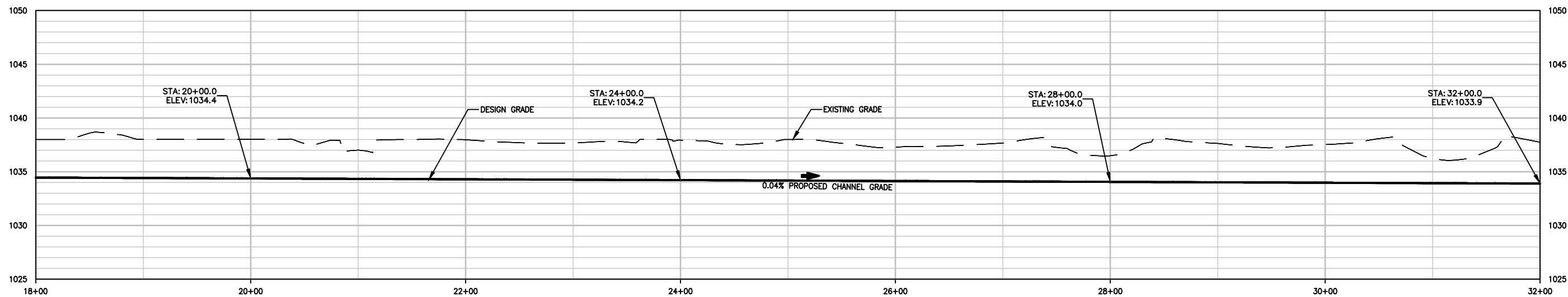
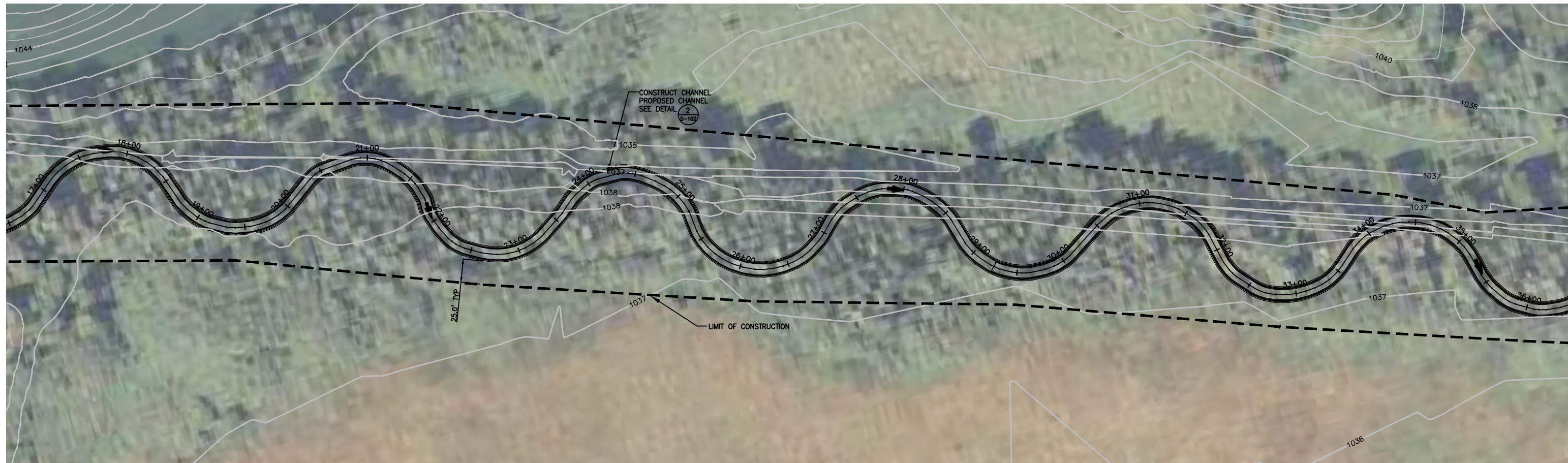
PRIME CONSULTANT

Wenck Associates, Inc.  
 Consulting Engineers  
 1800 PIONEER CREEK CENTER  
 MAPLE PLAIN, MN 55359  
 763-479-4200  
 763-479-4242  
 Web Site: www.wenck.com

PROJECT TITLE  
**KINGSTON WETLAND RESTORATION**

CLEARWATER RIVER  
 WATERSHED DISTRICT

SHEET TITLE			
CHANNEL PLAN AND PROFILE STA.3+00 TO STA. 18+00			
DWN BY	CHK'D	APP'D	DWG DATE
BWC	NCW	RK	12/20/2012
PROJECT NO.		SCALE	
0002-174		AS NOTED	
SHEET NO.		REV NO.	
C-103		3	



REV	REVISION DESCRIPTION	DWN	APP	REV DATE
3	FINAL PLANS	BWC	RK	12/20/12
2	DRAFT FINAL PLANS	BWC	NCW	12/20/12
1	DRAFT PLAN SET	JVB	NCW	09/26/12

SEAL  
 I HEREBY CERTIFY THAT THIS PLAN, SPECIFICATION, OR REPORT WAS PREPARED BY ME OR UNDER MY DIRECT SUPERVISION AND THAT I AM A DULY REGISTERED PROFESSIONAL ENGINEER UNDER THE LAWS OF THE STATE OF MINNESOTA.  
 PRINT NAME: REBECCA KLUCKHOHN  
 SIGNATURE: *Rebecca Kluckhohn*  
 DATE: 01/03/2013 REG. NO.: 42013

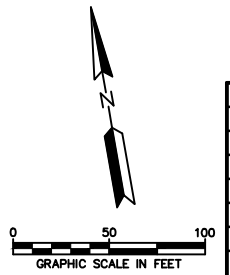
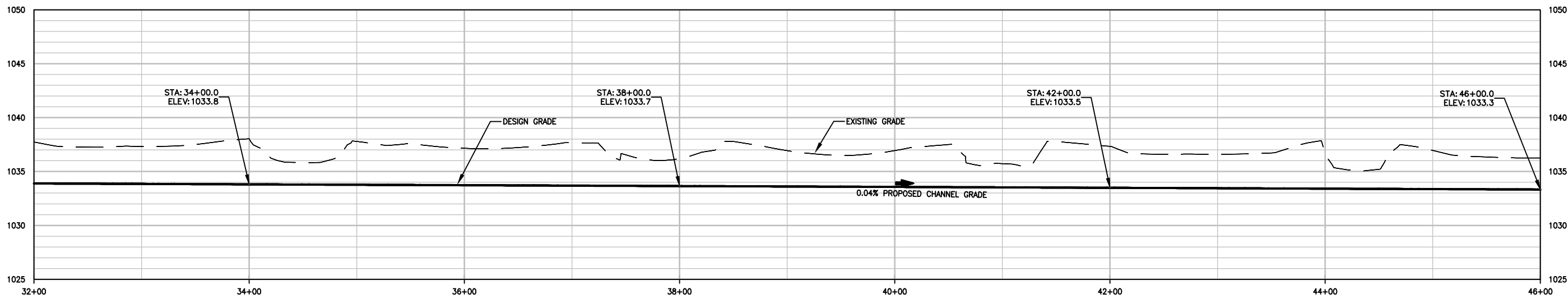
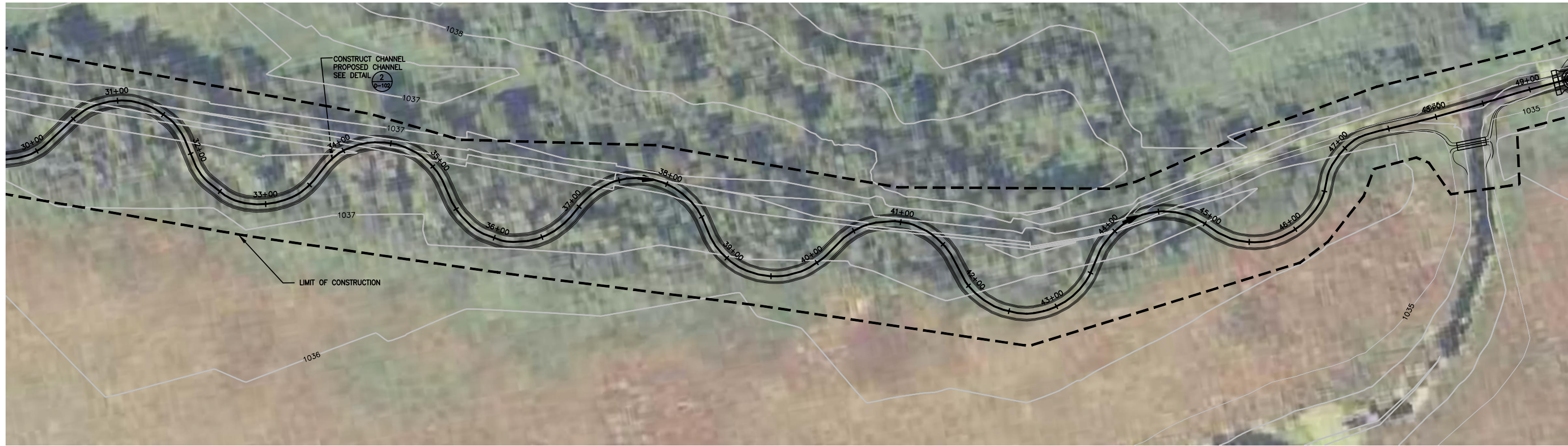
PRIME CONSULTANT

Wenck Associates, Inc.  
 Consulting Engineers  
 1800 PIONEER CREEK CENTER  
 MAPLE PLAIN, MN 55359  
 763-479-4200  
 763-479-4242  
 Web Site: www.wenck.com

PROJECT TITLE  
**KINGSTON WETLAND RESTORATION**

CLEARWATER RIVER WATERSHED DISTRICT

SHEET TITLE			
CHANNEL PLAN AND PROFILE STA. 18+00 TO STA. 32+00			
DWN BY BWC	CHK'D NCW	APP'D RK	DWG DATE 12/20/2012
PROJECT NO. 0002-174		SCALE AS NOTED	
SHEET NO. C-104		REV NO. 3	



REV	REVISION DESCRIPTION	DWN	APP	REV DATE
3	FINAL PLANS	BWC	RK	12/20/12
2	DRAFT FINAL PLANS	BWC	NCW	12/20/12
1	DRAFT PLAN SET	JVB	NCW	09/26/12

SEAL  
 I HEREBY CERTIFY THAT THIS PLAN, SPECIFICATION, OR REPORT WAS PREPARED BY ME OR UNDER MY DIRECT SUPERVISION AND THAT I AM A DULY REGISTERED PROFESSIONAL ENGINEER UNDER THE LAWS OF THE STATE OF MINNESOTA.  
 PRINT NAME: REBECCA KLUCKHOHN  
 SIGNATURE: *Rebecca Kluckhohn*  
 DATE: 01/03/2013 REG. NO.: 42013

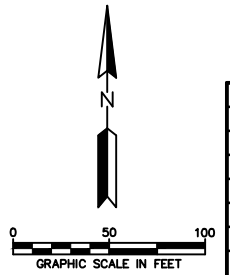
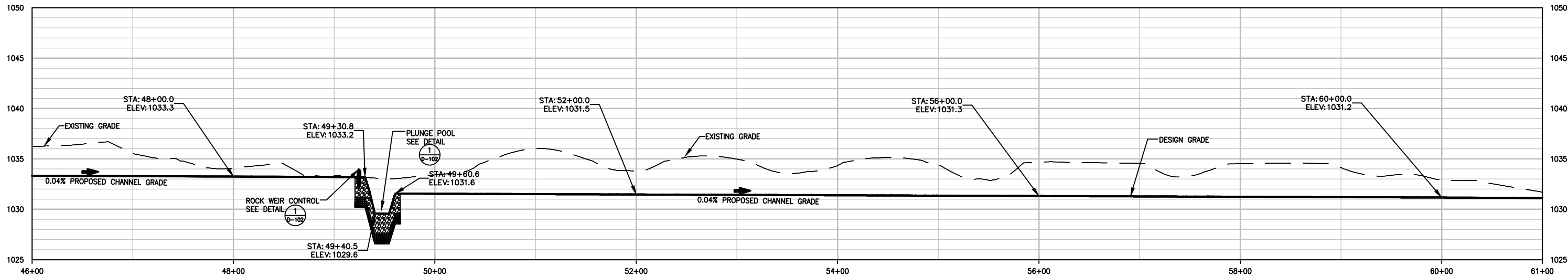
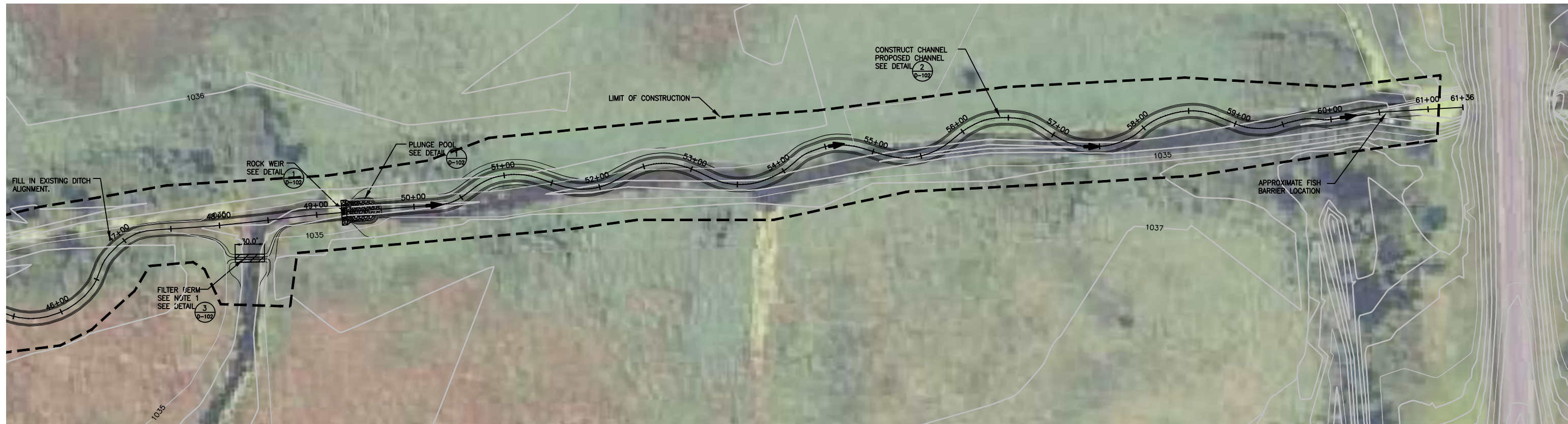
PRIME CONSULTANT

Wenck  
 Wenck Associates, Inc.  
 Consulting Engineers  
 1800 PIONEER CREEK CENTER  
 MAPLE PLAIN, MN 55359  
 763-479-4200  
 763-479-4242  
 Web Site: www.wenck.com

PROJECT TITLE  
 KINGSTON WETLAND RESTORATION

CLEARWATER RIVER  
 WATERSHED DISTRICT

SHEET TITLE			
CHANNEL PLAN AND PROFILE STA. 32+00 TO STA. 46+00			
DWN BY	CHK'D	APP'D	DWG DATE
BWC	NCW	RK	12/20/2012
PROJECT NO.		SCALE	
0002-174		AS NOTED	
SHEET NO.		REV NO.	
C-105		3	



REV	REVISION DESCRIPTION	DWN	APP	REV DATE
3	FINAL PLANS	BWC	RK	12/20/12
2	DRAFT FINAL PLANS	BWC	NCW	12/20/12
1	DRAFT PLAN SET	JVB	NCW	09/26/12

SEAL  
 I HEREBY CERTIFY THAT THIS PLAN, SPECIFICATION, OR REPORT WAS PREPARED BY ME OR UNDER MY DIRECT SUPERVISION AND THAT I AM A DULY REGISTERED PROFESSIONAL ENGINEER UNDER THE LAWS OF THE STATE OF MINNESOTA.  
 PRINT NAME: REBECCA KLICKHOHN  
 SIGNATURE: *Rebecca Klickhoehn*  
 DATE: 01/03/2013 REG. NO.: 42013

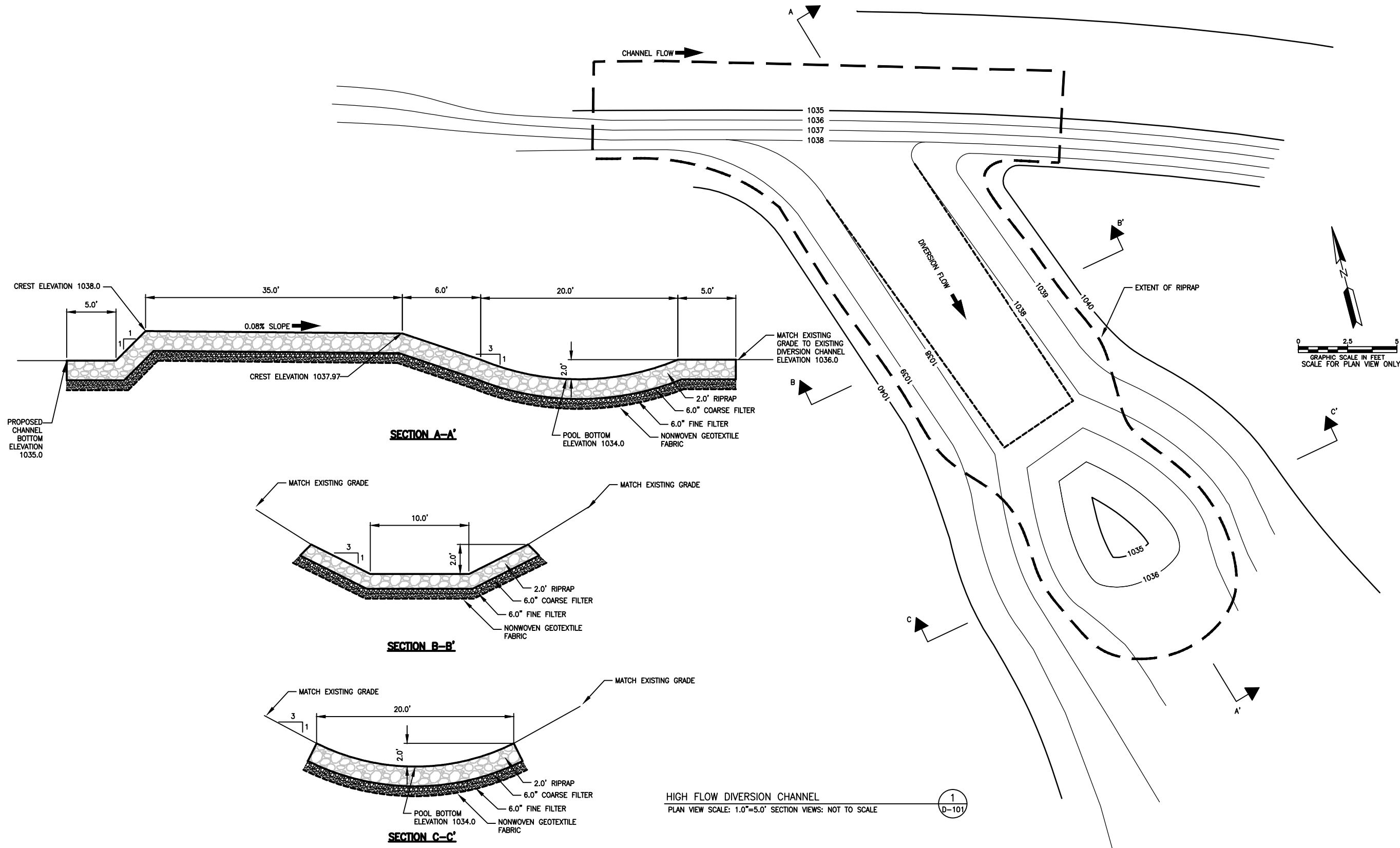
PRIME CONSULTANT

Wenck Associates, Inc.  
 Consulting Engineers  
 1800 PIONEER CREEK CENTER  
 MAPLE PLAIN, MN 55359  
 763-479-4200  
 763-479-4242  
 Web Site: www.wenck.com

PROJECT TITLE  
**KINGSTON WETLAND RESTORATION**

CLEARWATER RIVER  
 WATERSHED DISTRICT

SHEET TITLE			PROJECT NO.		
CHANNEL PLAN AND PROFILE STA.46+00 TO STA. 61+00			0002-174		
DWN BY	CHK'D	APP'D	DWG DATE	SCALE	
JVB	NCW	RK	9/26/12	AS NOTED	
SHEET NO.		REV NO.			
C-106		3			



HIGH FLOW DIVERSION CHANNEL  
 PLAN VIEW SCALE: 1.0"=5.0' SECTION VIEWS: NOT TO SCALE

REV	REVISION DESCRIPTION	DWN	APP	REV DATE
3	FINAL PLANS	BWC	RK	12/31/12
2	DRAFT FINAL PLANS	BWC	NCW	12/20/12
1	DRAFT PLAN SET	JVB	NCW	09/26/12

SEAL  
 I HEREBY CERTIFY THAT THIS PLAN, SPECIFICATION, OR REPORT WAS PREPARED BY ME OR UNDER MY DIRECT SUPERVISION AND THAT I AM A DULY REGISTERED PROFESSIONAL ENGINEER UNDER THE LAWS OF THE STATE OF MINNESOTA.  
 PRINT NAME: REBECCA KLICKHOHN  
 SIGNATURE: *Rebecca Kluckhohn*  
 DATE: 01/03/2013 REG. NO.: 42013

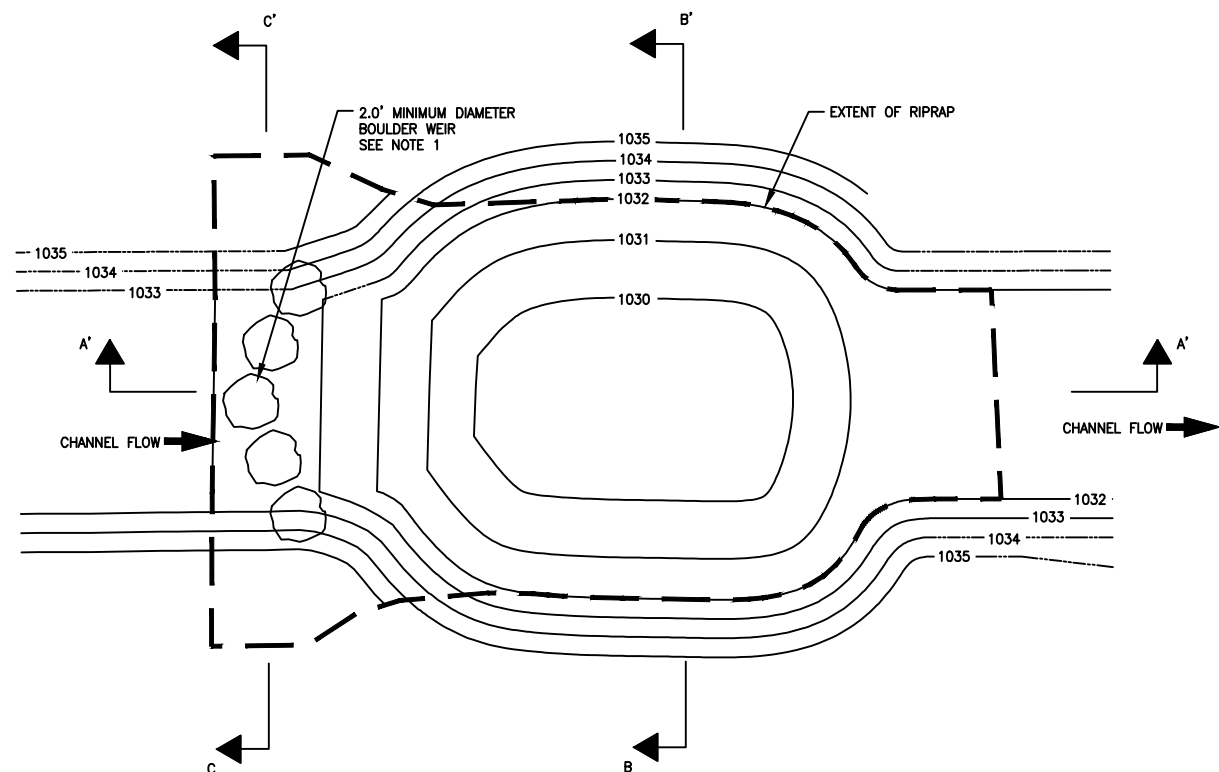
PRIME CONSULTANT

Wenck  
 Consulting Engineers  
 1800 PIONEER CREEK CENTER  
 MAPLE PLAIN, MN 55359  
 763-479-4200  
 763-479-4242  
 Web Site: www.wenck.com

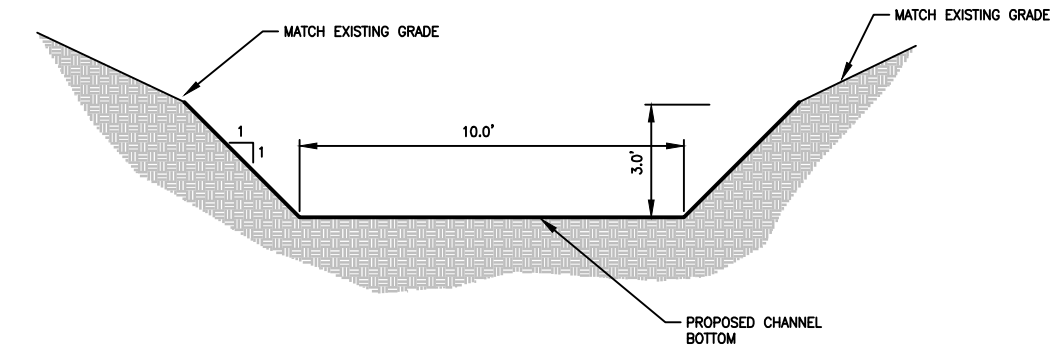
PROJECT TITLE  
 KINGSTON WETLAND RESTORATION

CLEARWATER RIVER  
 WATERSHED DISTRICT

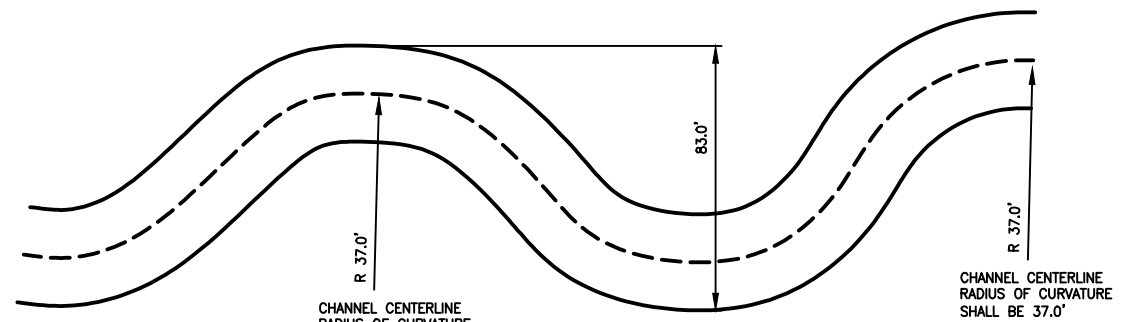
SHEET TITLE			
DETAILS			
DWN BY	CHK'D	APP'D	DWG DATE
BWC	NCW	RK	12/21/2012
PROJECT NO.		SCALE	
0002-174		AS NOTED	
SHEET NO.		REV NO.	
D-101		3	



RIPRAP BASIN AND ROCK WEIR DETAIL  
SCALE: 1"=5' ABOVE, NOT TO SCALE BELOW

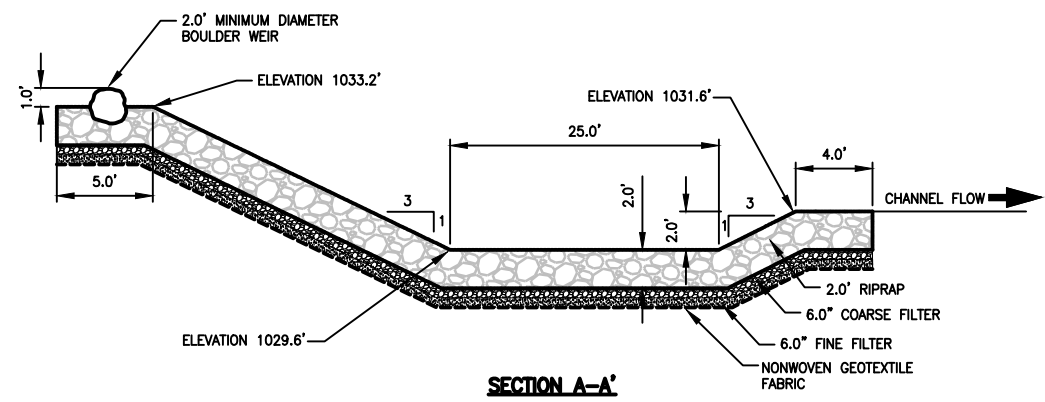


SECTION

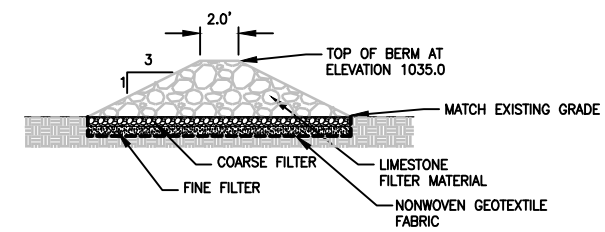


PLAN

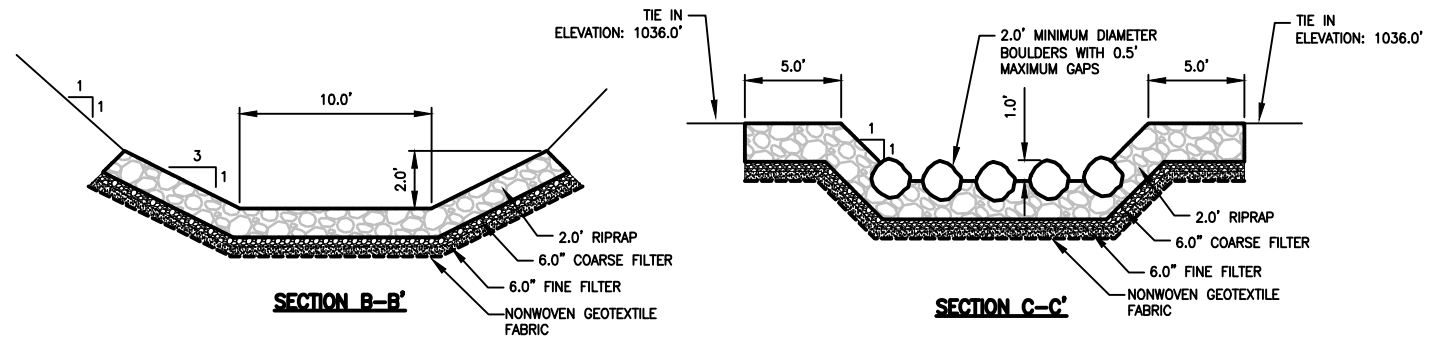
TYPICAL DITCH DETAILS  
NOT TO SCALE



SECTION A-A'



LIMESTONE FILTER BERM TYPICAL CROSS SECTION  
NOT TO SCALE



SECTION B-B'

SECTION C-C'

REV	REVISION DESCRIPTION	DWN	APP	REV DATE
3	FINAL PLANS	BWC	RK	12/31/12
2	DRAFT FINAL PLANS	BWC	NCW	12/20/12
1	DRAFT PLAN SET	JVB	NCW	09/26/12

SEAL  
I HEREBY CERTIFY THAT THIS PLAN, SPECIFICATION, OR REPORT WAS PREPARED BY ME OR UNDER MY DIRECT SUPERVISION AND THAT I AM A DULY REGISTERED PROFESSIONAL ENGINEER UNDER THE LAWS OF THE STATE OF MINNESOTA.  
PRINT NAME: REBECCA KLUCKHOHN  
SIGNATURE: *Rebecca Kluckhohn*  
DATE: 01/03/2013 REG. NO.: 42013

PRIME CONSULTANT  
**Wenck**  
Wenck Associates, Inc.  
Consulting Engineers  
1800 PIONEER CREEK CENTER  
MAPLE PLAIN, MN 55359  
763-479-4200  
763-479-4242  
Web Site: www.wenck.com

PROJECT TITLE  
KINGSTON WETLAND RESTORATION  
CLEARWATER RIVER WATERSHED DISTRICT

SHEET TITLE			
DETAILS			
DWN BY	CHK'D	APP'D	DWG DATE
BWC	NCW	RK	12/21/2012
PROJECT NO.		SCALE	
0002-174		AS NOTED	
SHEET NO.		REV NO.	
D-102		3	



# KINGSTON WETLAND

## RESTORATION KINGSTON, MN

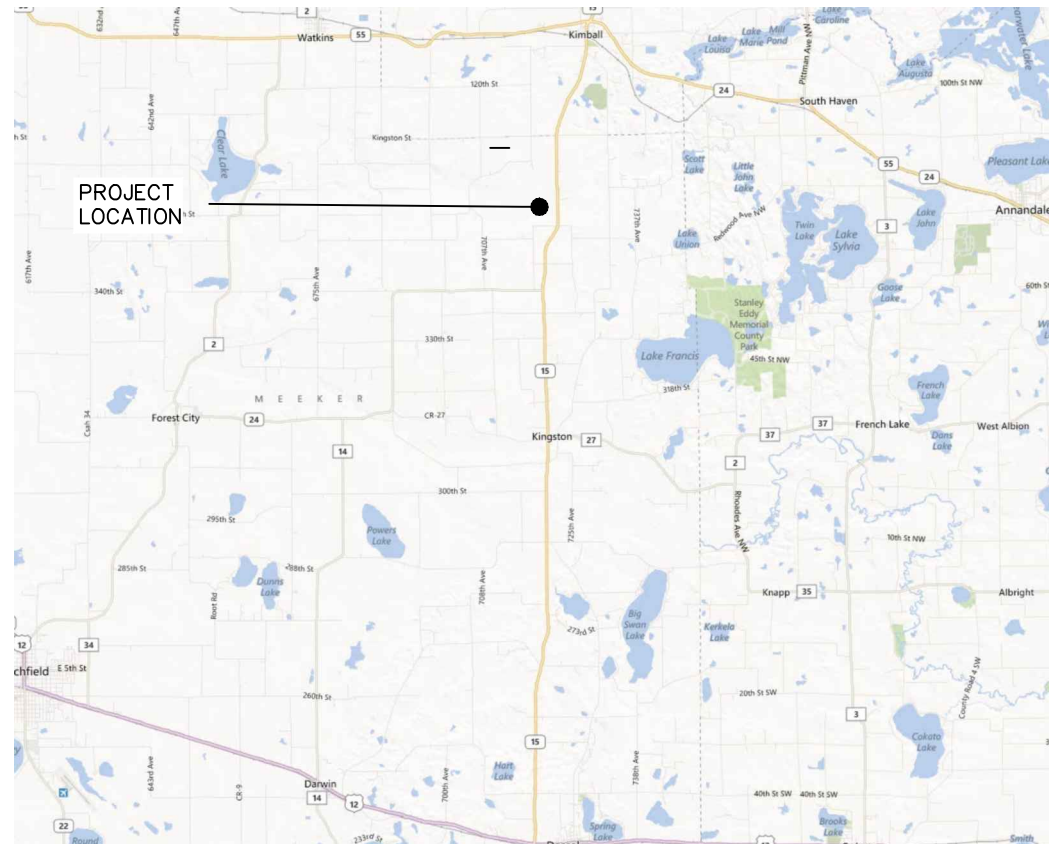
DECEMBER, 2012

**WARNING:**

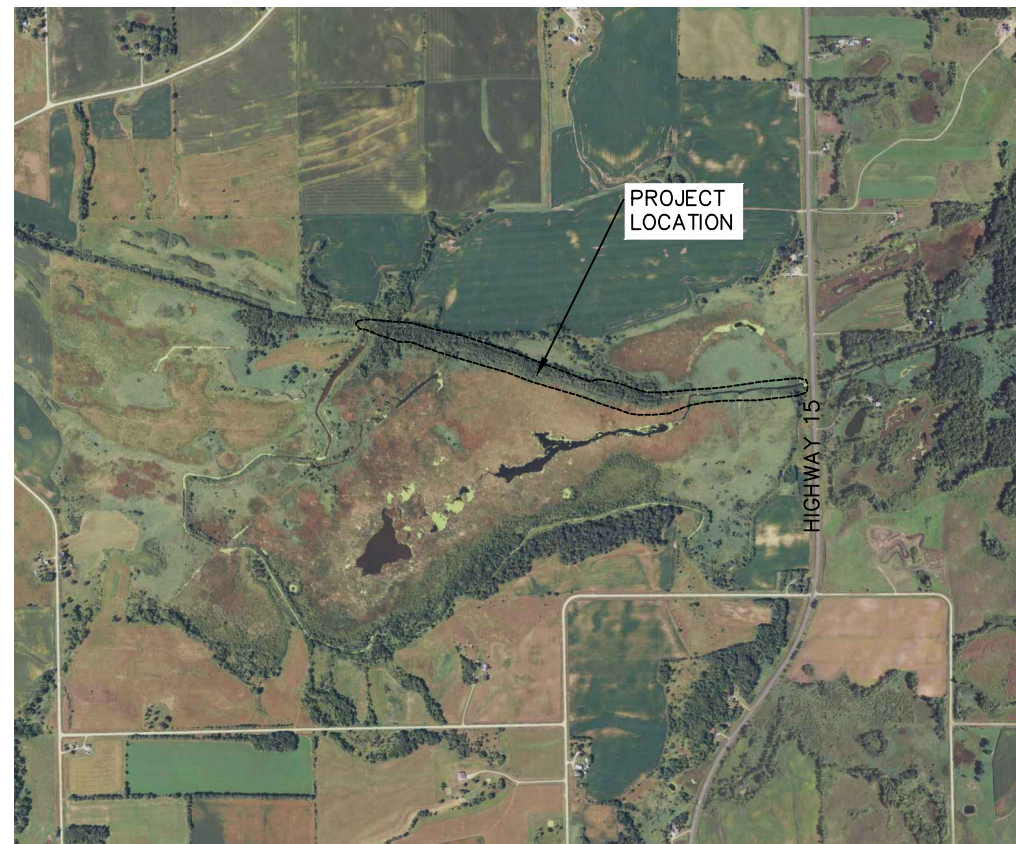
THE CONTRACTOR SHALL BE RESPONSIBLE FOR CALLING FOR LOCATIONS OF ALL EXISTING UTILITIES. THEY SHALL COOPERATE WITH ALL UTILITY COMPANIES IN MAINTAINING THEIR SERVICE AND/OR RELOCATION OF LINES.

THE CONTRACTOR SHALL CONTACT GOPHER STATE ONE CALL AT 651-454-0002 AT LEAST 48 HOURS IN ADVANCE FOR THE LOCATIONS OF ALL UNDERGROUND WIRES, CABLES, CONDUITS, PIPES, MANHOLES, VALVES OR OTHER BURIED STRUCTURES BEFORE DIGGING. THE CONTRACTOR SHALL REPAIR OR REPLACE THE ABOVE WHEN DAMAGED DURING CONSTRUCTION AT NO COST TO THE OWNER.

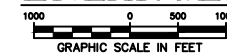
CALL BEFORE YOU DIG  
**GOPHER STATE ONE CALL**  
 TWIN CITY AREA: 651-454-0002  
 TOLL FREE 1-800-252-1166



**PROJECT LOCATION MAP**



**ENLARGED PROJECT LOCATION MAP**



**INDEX OF SHEETS**

G-101	TITLE AND INDEX SHEET
C-101	EXISTING CONDITIONS
C-102	PROJECT OVERVIEW
C-103	CHANNEL PLAN AND PROFILE STA 3+00 TO 18+00
C-104	CHANNEL PLAN AND PROFILE STA 18+00 TO 32+00
C-105	CHANNEL PLAN AND PROFILE STA 32+00 TO 46+00
C-106	CHANNEL PLAN AND PROFILE STA 46+00 TO 61+00
D-101	DETAILS
D-102	DETAILS

**GOVERNING SPECIFICATIONS:**

1. THE MINNESOTA DEPARTMENT OF TRANSPORTATION "STANDARD SPECIFICATIONS FOR CONSTRUCTION" LATEST EDITION & SUPPLEMENTS.
2. CITY ENGINEERS ASSOCIATION OF MINNESOTA (CEAM) STANDARD UTILITIES SPECIFICATIONS (LATEST EDITION)
3. ALL APPLICABLE FEDERAL, STATE AND LOCAL LAWS AND ORDINANCE WILL BE COMPLETED WITH IN THE CONSTRUCTION OF THIS PROJECT.

REV	REVISION DESCRIPTION	DWN	APP	REV DATE
2	FINAL PLANS	BWC	RK	12/31/12
1	DRAFT FINAL PLANS	BWC	NCW	12/21/12

SEAL  
 I HEREBY CERTIFY THAT THIS PLAN, SPECIFICATION, OR REPORT WAS PREPARED BY ME OR UNDER MY DIRECT SUPERVISION AND THAT I AM A DULY REGISTERED PROFESSIONAL ENGINEER UNDER THE LAWS OF THE STATE OF MINNESOTA.  
 PRINT NAME: REBECCA KLUCKHOHN  
 SIGNATURE: *Rebecca Kluckhohn*  
 DATE: 01/03/2013 REG. NO. 42013

PRIME CONSULTANT

Wenck  
 Consulting Engineers  
 1800 PIONEER CREEK CENTER MAPLE PLAIN, MN 55359 (763)-479-4200 (763)-479-4242

PROJECT TITLE	KINGSTON WETLAND RESTORATION		
	CLEARWATER RIVER WATERSHED DISTRICT		

SHEET TITLE				TITLE AND INDEX SHEET		
DWN BY	CHK'D	APP'D	DWG DATE	12/21/2012		
BWC	NCW	RK	SCALE	AS NOTED		
PROJECT NO.	SHEET NO.		REV NO.			
2683-08	G-101		2			